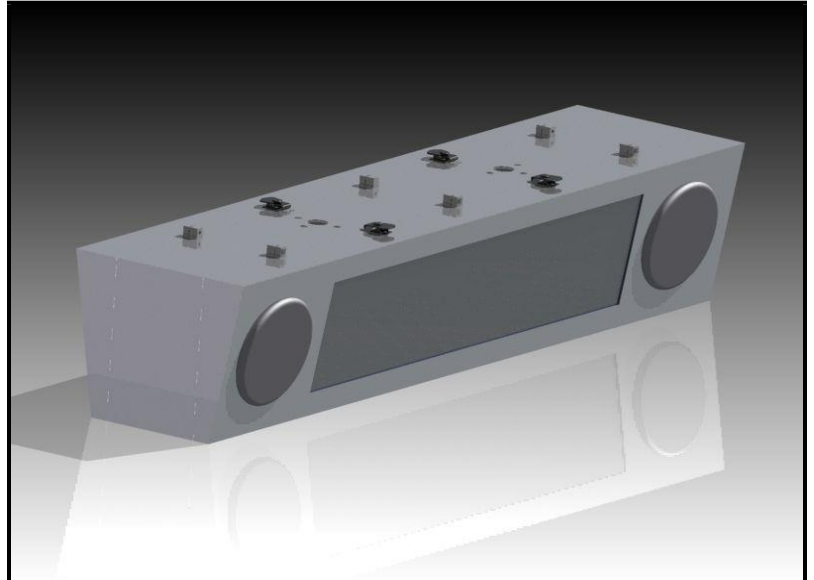


FEATURES

- **Temperature Range of -30C to +70C**
- **UL-48 Certified**
- **32 x 128 LED Matrix**
 - 1 LED / Pixel
 - LED Color – Amber
 - LED Intensity - 1500mcd
 - LED Diameter - 5mm
 - LED Viewing Angle – 45 degrees
 - 0.3” Pixel Dot Pitch
- **Enclosure**
 - Tamper Proof Fasteners
 - Designed to NEMA-4 Specification
 - Hinged front access covers
 - Lexan Lens
- **Functional Requirements**
 - 50 ADA compliant fonts
- **Controller Interface**
 - Ethernet
 - RS422/RS485
 - Open Protocol
- **Memory**
 - 4-Mbit of user FLASH
- **Certification**
 - UL 48 - Electric Signs (Pending Approval)



ELECTRICAL SPECIFICATIONS

Input Voltage	90-253V _{AC}
Maximum Power Consumption	120W per side
Min Operating Temperature	-10°C
Max Operating Temperature	+50°C
Ethernet Interface	10/100 Ethernet
Serial Interface	RS422/RS485

MECHANICAL SPECIFICATIONS

Height	16in.
Width	45in.
Depth	12in.

ORDERING INFORMATION

Item	Catalog Number
Single Sided	SiCMS-AMBER-32-128-SS
Double Sided	SiCMS-AMBER-32-128-DS

Note: Different lengths available upon request

DESCRIPTION

The SiCMS family of changeable message signs provides superior performance in outdoor applications. Each sign interfaces to a sign controller using an open protocol over Ethernet or RS422/RS485. The signs include an automatic brightness control using an internal ambient light sensor. LEDs are chosen to provide a uniform brightness. The SiCMS is available in both single and dual sided versions with a standard or custom enclosure. Each sign panel is powered by a universal AC input. Each sign will have the capability to store 100 messages with 100 characters for each message. Each sign will have the ability to create user bit-map characters or pixel based graphics.