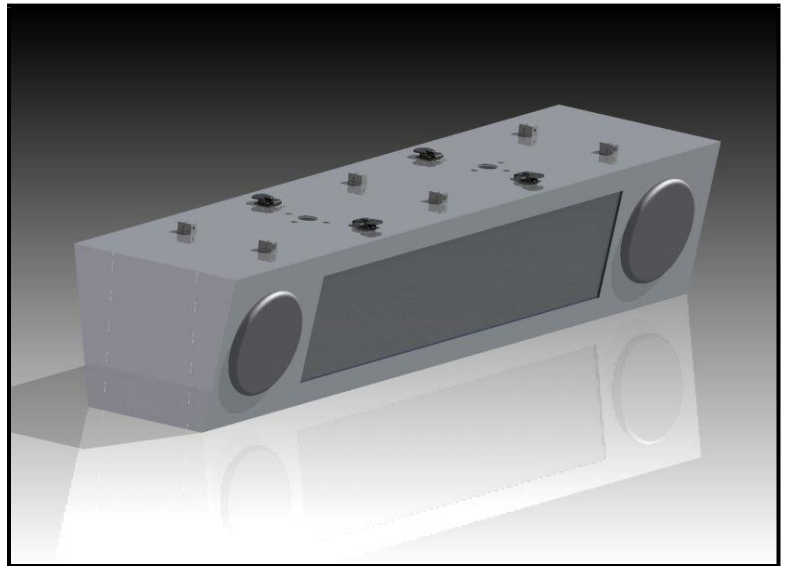


FEATURES

- **Temperature Range of -30C to +70C**
- **UL-48 Certified**
- **16 x 144 LED Matrix**
 - 1 LED / Pixel
 - LED Color – Amber
 - LED Intensity - 1500mcd
 - LED Diameter - 5mm
 - LED Viewing Angle – 45 degrees
 - 0.3” dot pitch
- **Enclosure**
 - Tamper Proof Fasteners
 - Designed to NEMA-4 Specification
 - Hinged front access covers
 - Lexan Lens
- **Functional Requirements**
 - 50 ADA compliant fonts
- **Controller Interface**
 - Ethernet
 - RS422/RS485
 - Open Protocol
- **Memory**
 - 4-Mbit of user FLASH



DESCRIPTION

The SiCMS family of Trilogy changeable message signs provides superior performance in outdoor applications. Each sign interfaces to a sign controller using an open protocol over Ethernet or RS422/RS485. The signs include an automatic brightness control using an internal ambient light sensor. LEDs are chosen to provide a uniform brightness. The SiCMS is available in both single and dual sided versions with a standard or custom enclosure. Each sign panel is powered by a universal AC input. Each sign will have the capability to store 100 messages with 100 characters for each message. Each sign will have the ability to create user bit-map characters or pixel based graphics.

SINGLE SIDED ELECTRICAL SPECIFICATIONS

Input Voltage..... 90-253V_{AC}
 Maximum Power Consumption..... 120W per side
 Min Operating Temperature..... -10°C
 Max Operating Temperature +50°C
 Communications Interface 10/100 Ethernet

MECHANICAL SPECIFICATIONS

See attached sheet

ORDERING INFORMATION

Item	Catalog Number
Single Sided with 0 Camera Holes	SiCMS-AMBER-16-144-SS-0C
Single Sided with 1 Camera Holes	SiCMS- AMBER -16-144-SS-1C
Single Sided with 2 Camera Holes	SiCMS- AMBER -16-144-SS-2C
Two Sided with 0 Camera Holes	SiCMS- AMBER -16-144-DS-0C
Two Sided with 1 Camera Hole	SiCMS- AMBER -16-144-DS-1C
Two Sided with 2 Camera Holes	SiCMS- AMBER -16-144-DS-2C

Note: Different lengths available upon request

