

FEATURES

- **Configurable as Push-Pull-Turn, Push-Pull Only or Turn Only**
- **30V/100mA Normally Open Contacts**
- **Small Panel Footprint (1.25" x 1.063")**
- **Maintenance-free, > 100,000 cycle life**
- **Suitable for operation from -40 to +70°C**
- **¼" shaft accepts a variety of knob styles**
- **Mounts in panel up to 0.25" thick**

OVERVIEW

The SIPPT-SW-xxx is a multi-function switch that can be ordered in a variety of configurations. Push, pull, and left-right turn operations are supported and provide a normally open contact closure for each operation. The switch may be configured for momentary operation in any of these movements, or latching behavior.

The switch is panel-mountable and has a small footprint, at only 1.25" wide x 1.063" high x 3.8" deep from panel mounting face to terminal block. Two options are provided for anti-rotation protection – a 1/16" roll pin, and a 3/8-32" D-profile threaded shaft. Because the roll pin requires a 1/16" hole in the panel, it may be removed in favor of the D-shaft for a cleaner appearance. Mounting hardware is included with the switch.

Switch contacts are available rated for low-voltage DC up to 30V and 100mA, and for voltages and currents up to 125VAC and 5A. Connections are made via tension clamp style terminals that accept wire sizes from 16-24 AWG.



ELECTRICAL SPECIFICATIONS

| | | |
|---------------------------|-------|----------------------------|
| Max. Voltage Switched | _____ | 30V _{DC} / 125VAC |
| Max Current Switched | _____ | Up to 3A (AC) / 2A (DC) |
| Min Operating Temperature | _____ | -40°C |
| Max Operating Temperature | _____ | +70°C |
| Mechanical Cycle Life | _____ | > 100,000 |
| Electrical Cycle Life | _____ | > 100,000 (100mA DC) |
| | _____ | 30,000 (2A DC / 3A AC) |
| | _____ | 10,000 (5A AC) |

MECHANICAL SPECIFICATIONS

| | | |
|----------------|-------|----------|
| Height | _____ | 1.063 in |
| Width | _____ | 1.25 in |
| Depth | _____ | 3.81 in |
| Max Wire Gauge | _____ | #16 AWG |

ORDERING INFORMATION

The SiPPT-SW-xxx switch assembly has the following part number structure:

SiPPT - SW - 1 2 3

1. Operations Supported

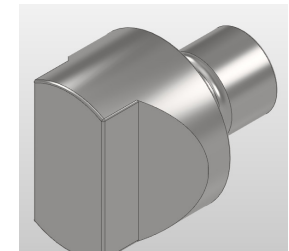
- A: Push/Pull/Turn
- B: Push/Pull Only
- C: Turn Only

2. Switch Contact Rating

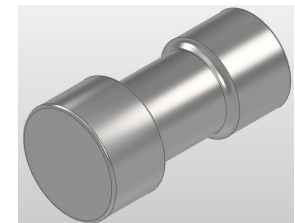
- 1: 100mA, 30VDC
- 2: 2A, 30VDC or 3A, 125VAC
- 3: 5A, 125VAC

3. Knob Style (See Illustration)

- K1: Large Beveled
- K2: Compact



STYLE K1



STYLE K2

Switch configured as shown on page 1: SiPPT-SW-A1K1

MECHANICAL INFORMATION

