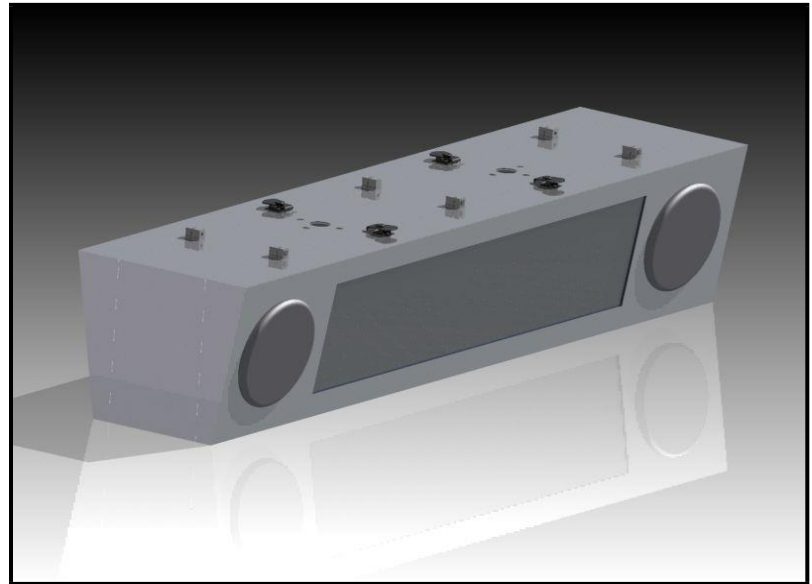


**FEATURES**

- **Temperature Range of -30C to +70C**
- **UL-48 Certified**
- **32 x XXX LED Matrix**
  - 1 RGB LED / Pixel
  - LED Color – Full Color
  - LED Intensity - 1500 mcd
  - LED Diameter - 5mm
  - LED Viewing Angle – 45 degrees
  - 0.3” dot pitch
- **Enclosure**
  - Tamper Proof Fasteners
  - Designed to NEMA-4 Specification
  - Hinged front access covers
  - Lexan Lens
- **Functional Requirements**
  - ADA compliant fonts
- **Controller Interface**
  - Ethernet
  - RS422/RS485
  - Open Protocol
- **Memory**
  - 32Gbit of user FLASH



**SINGLE SIDED ELECTRICAL SPECIFICATIONS**

Input Voltage.....	100-240V <sub>AC</sub>
Power Consumption.....	See Attached
Maximum Power Consumption .....	See Attached Sheet
Min Operating Temperature .....	-10°C
Max Operating Temperature .....	+50°C
Ethernet Interface.....	10/100 – RJ45
Serial Interface .....	RS232/RS485/RS422

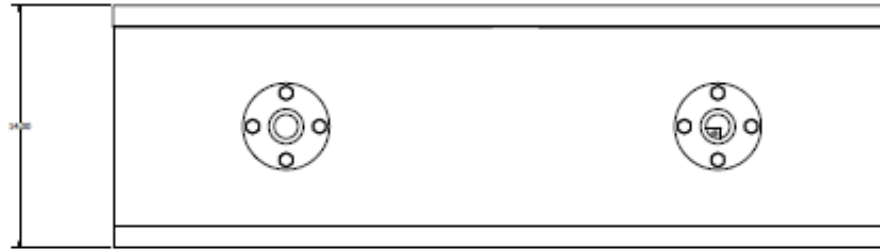
**MECHANICAL CHARACTERISTICS**

Body Material .....	Stainless or Painted Steel
Lens Material .....	1/4in Thick Polycarbonate
Access .....	Tamper Proof Hinged Door

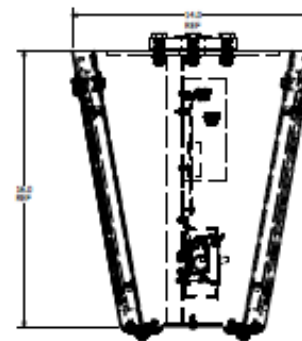
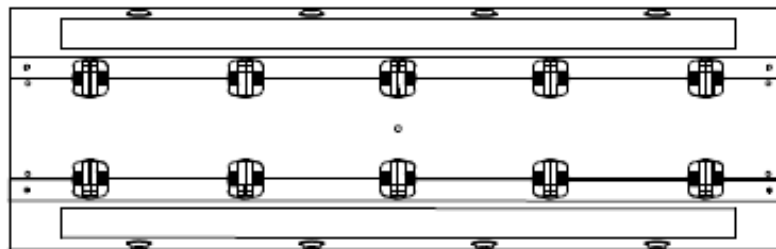
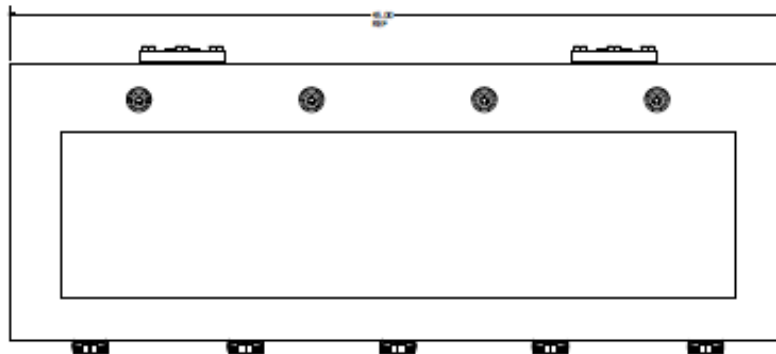
**DESCRIPTION**

The SiVMS family of Trilogy changeable message signs provides superior performance in outdoor applications. Each sign interfaces to a sign controller using an open protocol over Ethernet or RS422/RS485. The signs include an automatic brightness control using an internal ambient light sensor. LEDs are chosen to provide a uniform brightness. The SiVMS is available in both single and dual sided versions with a standard or custom enclosure. Each sign panel is powered by a universal AC input and will be capable of storing 100 messages with 100 characters for each message. Each sign will have the ability to create user bit-map characters or pixel based graphics.

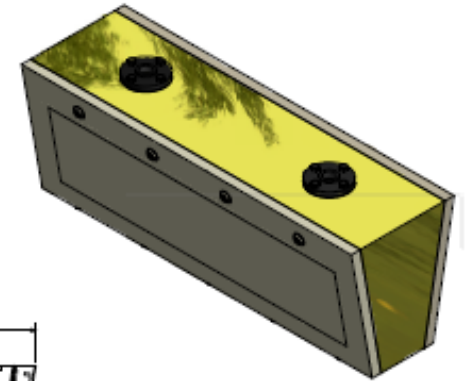
SIZE SPECIFIC CHARACTERISTICS			ORDERING INFORMATION			
Item	Power Draw	Dimensions LxHxD (in)	Catalog Number	Integrated Speaker	Enclosure Louver	Cooling Fan
Dual Sided 32x144 RGB	850W	45 x 15 x 16	SiCMS-RGB-32x144-DS	-SK	-LV	-FA
Single Sided 32x144 RGB	500W	45 x 15 x 8	SiCMS-RGB-32x144-SS	-SK	-LV	-FA
Dual Sided 32x160 RGB	950W	53 x 14 x 16	SiCMS-RGB-32x160-DS	-SK	-LV	-FA
Single Sided 32x160 RGB	500W	53 x 14 x 7.5	SiCMS-RGB-32x160-SS	-SK	-LV	-FA
Dual Sided 32x240 RGB	1450W	77 x 14 x 16	SiCMS-RGB-32x240-DS	-SK	-LV	-FA
Single Sided 32x240 RGB	750W	77 x 14 x 7.5	SiCMS-RGB-32x240-SS	-SK	-LV	-FA



THIS VIEW SHOWN WITH LED FRAMES HIDDEN FOR CLARITY



VIEW2  
SCALE 1 / 3



VIEW4  
SCALE 1 / 5