

FEATURES

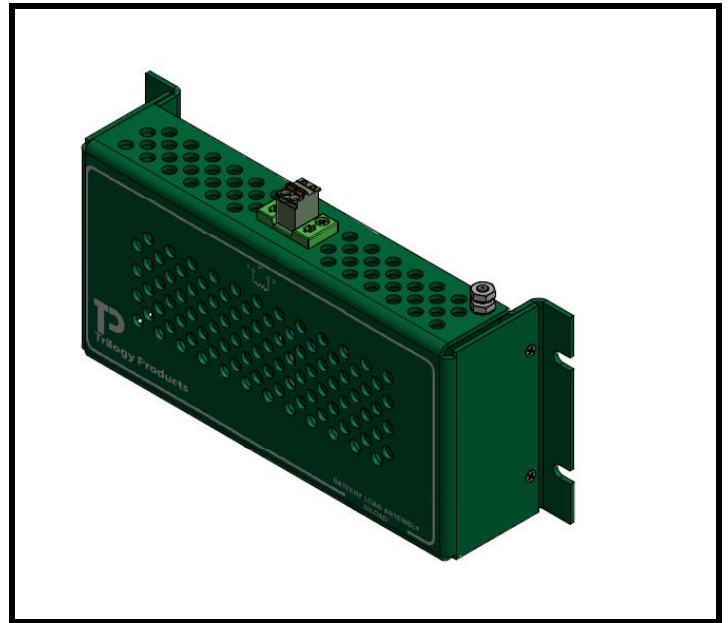
- Provides up to an 85W Load
- Loads 12V-18V, 18V-28V or 28V-36V Batteries
- 2 Pin Interface to Trilogy BMS
- Meets AREMA Class C Standard

DESCRIPTION

The Trilogy Battery Management System (BMS) Load meets all the AREMA Class C standards for temperature, shock and vibration and dielectric strength.

The Trilogy Battery Management System (BMS) Load is designed to provide an external load for battery systems that require load testing. The BMS Load provides an interface to the Trilogy Products Battery Management System (BMS). The BMS Load allows for the battery to be tested remotely if desired. If the battery is fully charged and not under load, the user can perform the test to determine if the AH rating of the battery is acceptable. With the BMS system, this can be done on location, remotely or a programmed interval. The BMS provides an LED that is on when the load is engaged. The built-in data logger in the Trilogy Battery Charger will then store the results of the test and/or provide an alarm if the battery test does not pass.

The BMS Load comes has three versions which can interface to 12V to 18V, 18V to 28V or 28V to 36V battery systems. The wattage drawn from the battery bank will vary based on the batteries voltage.



ELECTRICAL SPECIFICATIONS

Maximum Power Draw 85W
 Min Operating Temperature..... -40°C
 Max Operating Temperature +70°C

MECHANICAL SPECIFICATIONS

Height 4 in
 Width (exclude's mounting tabs)..... 8 in
 Depth..... 1.5 in
 Weight 5 lbs

ORDERING INFORMATION

Item	Float Voltage Range	Catalog Number
BMS Load 12V System	12V-18V	SiLOAD-12
BMS Load 24V System	18V-28V	SiLOAD-24
BMS Load 36V System	28V-36V	SiLOAD-36

