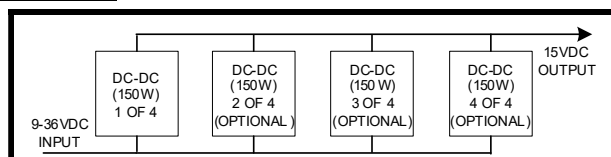


FEATURES

- **9V to 36V DC Input**
- **Isolated Output**
- **600W Maximum Output Power**
- **90% Efficiency**
- **Extended Temperature Range**
- **No Cooling Fans Required**
- **4 Configurable 150W Modules**
- **AAR Binding Post Wire Connections**
- **Form-C Contact for Trouble Alarms**
- **AREMA Class C Environmental**
- **Power Modules Meet UL 60950-1**



TOPOLOGY



DESCRIPTION

The 15V, 600W DC to DC Converter is a high efficiency power supply that can handle input voltages from 9VDC to 36VDC. It is designed to operate from -30C to +70C ambient with no cooling fans. Over the temperature and input voltage range, and with load transitions from 10% to 100%, the supply will maintain the output voltage within +/-2%.

The unit features 4 module sockets that can be populated on the board to provide output power levels from 150W to 600W in 150W increments, so that the output power can be tailored to the specific application. No fans are required, instead the modules make use of a passive aluminum heatsink on each module (included with modules).

Output modules are available in the following voltages: 5, 12, 15, 24, 28, 40, and 50. All modules accept 9-36V input, however it is not recommended to use the modules in a high boost configuration (i.e. 12 to 50, for example) due to high input current requirements.

The DC-DC converter features a bank of 3 seven-segment displays that are used to display the output current, output voltage, and input voltage in a sequential fashion. A button allows the user to freeze the cycling to observe the currently displayed parameter. A green LED indicates supply health.

The DC-DC converter provides an alarm relay contact that is normally closed during fault-free operation. If a fault occurs, or if the unit is unpowered, the alarm relay contact will open.

PROTECTION FEATURES

The DC-DC converter has the following protection features:

- Under Voltage Lock Out($< 9V_{DC}$)
- Output Current Limit
- Output Over-Voltage Limit
- Over Temperature Shutdown ($100^{\circ}C$)

ELECTRICAL SPECIFICATIONS

Input Voltage _____ $9V_{DC}$ to $36V_{DC}$
 Maximum Input Power _____ 680W
 Output Voltage _____ 5, 12, 15, 24, 28, 40 or $50V_{DC}$ +/-2%
 Maximum Output Power _____ $600W@15V_{DC}$
 Min Operating Temperature _____ $-30^{\circ}C$
 Max Operating Temperature _____ $+70^{\circ}C$
 Alarm Relay Contact Rating _____ 5A
 Maximum External Fuse Size _____ 75A

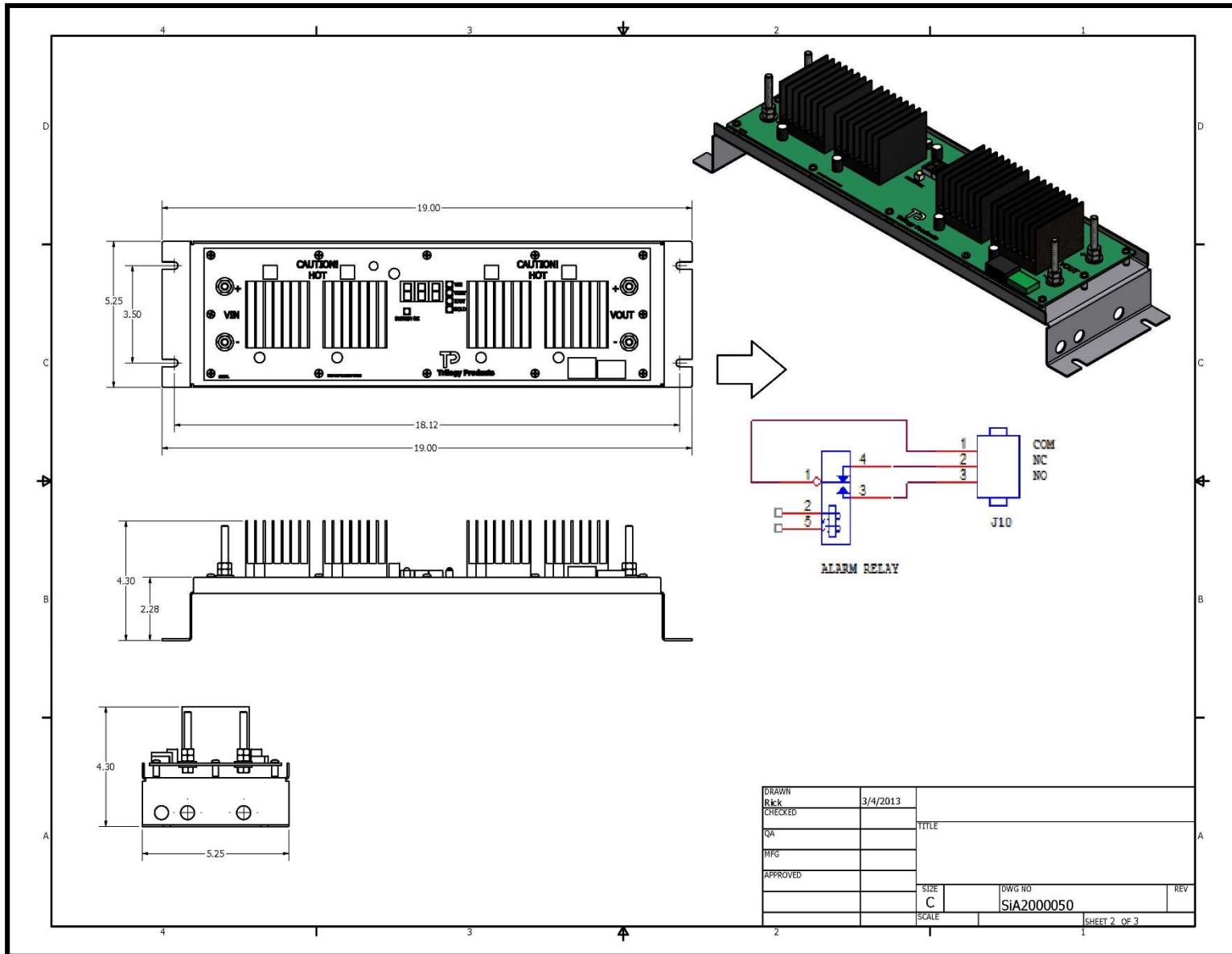
MECHANICAL SPECIFICATIONS

Height _____ 5.22 in (3U)
 Width _____ 19.0 in
 Depth _____ 4.25 in
 Weight _____ 5 lbs

ORDERING INFORMATION

Item	Catalog Number
DC-DC Converter 1 Module (150W)	SiPS-xxV-1x150W-DCDC
DC-DC Converter 2 Modules (300W)	SiPS-xxV-2x150W-DCDC
DC-DC Converter 3 Modules (450W)	SiPS-xxV-3x150W-DCDC
DC-DC Converter 4 Modules (600W)	SiPS-xxV-4x150W-DCDC
150W Individual Power Module Kit	SiPM-150W-KIT-xxV

Specify module voltage in the "xx" field above when ordering.



DRAWN	Rkk	3/4/2013		
CHECKED			TITLE	
QA				
MFG				
APPROVED				
			SIZE	DWG NO
			C	SIA2000050
			SCALE	REV
				SHEET 2 OF 3